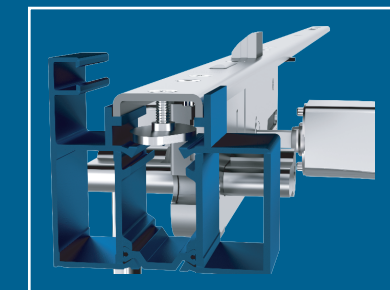


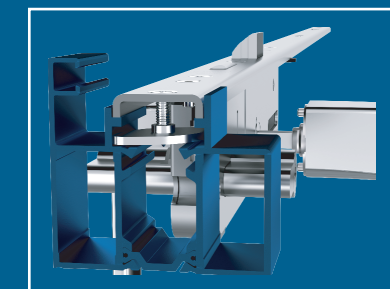
#### HOOK AND PITON LOCKING SYSTEM

Robust conical entry hook, which allows optimized advancement with a perfect fit on the frame leaf, even under conditions of sheet distortion.

The gear system of the end locks allow for a multiplication of the advancement force of the hooks and pitons by more than 5 times compared to a conventional lock, thanks to the axis mechanism.



Counter plate supplied in the position that allows immediate insertion of the lock on the profil groove.



Simply fasten the screw, to make the counter plate rotate on the groove inside, and fix the lock to the profile.

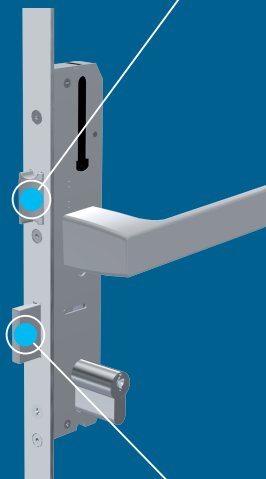
#### LOCK FRONT

304 Stainless steel, flat front or "U" shaped. Supports installation with quick-fit clips, eliminating the need for direct screws into the profile.



#### LOCK LATCH

Easily interchangeable from right to left and vice versa, with a zinc/nickel 480 hours surface finish in a salt spray chamber. With a self-lubricating POM silencer, certified according to EN 12209 standard.



#### LOCK ADVANCING BOLT

With the progressive advancement through the gear system. Zinc/nickel treatment of 480 hours in a salt spray chamber, providing high anti-corrosive protection.



ERRETI - GNS - RAGNI - SOTRALU  
are companies of

**SOTRALU**  
GROUP

#### GNS

E.N. 1- Mouisca do Vouga  
3754-901 Águeda  
PORTUGAL  
tel. +351 234 644 224  
[info@ingns.com](mailto:info@ingns.com)  
[www.ingns.com](http://www.ingns.com)

#### RAGNI

Zona Industriale Squartabue n.nc  
62019 Recanati (MC)  
ITALY  
tel. +39 0717 506 174  
[info@ragni-fr.com](mailto:info@ragni-fr.com)  
[www.fraccessories.com](http://www.fraccessories.com)

**SOTRALU**  
GROUP

**GNS**

## GEAR ACTION LOCK

DEVELOPED TO ENABLE A SMOOTH,  
ROBUST, AND PROGRESSIVE LOCKING

**SOTRALU**  
GROUP



### LOCK GEAR ACTION REF. 7765

The gear action system has been developed to allow a robust, smooth and progressive locking of the entire system.

The gear lock has achieved the grade 3 usage category (high usage) in tests conducted in an independent laboratory. In the same test, it was awarded the grade C durability rating, as the lock surpassed 200 000 cycles.

### HIGH SECURITY LOCK

Central lock with a gear mechanism featuring two turns of the key for a smooth and progressive locking, with a hook and bolt system at the ends of the lock, with a conical entry.

### CERTIFICATION EN 12209:2016

Certification for 200 000 cycles of Grade C and usage category Grade 3 (plus 20% / 40 000 cycles of warranty).

### CORRECTS DEFORMATIONS IN THE DOOR CAUSED BY HEAT EXPOSURE

The progressive locking of the system and the conical geometry of the hooks and pitons allow for the correction of deformations caused by the exposure of the door to high temperatures.

### WIDE RANGE OF MEASURES

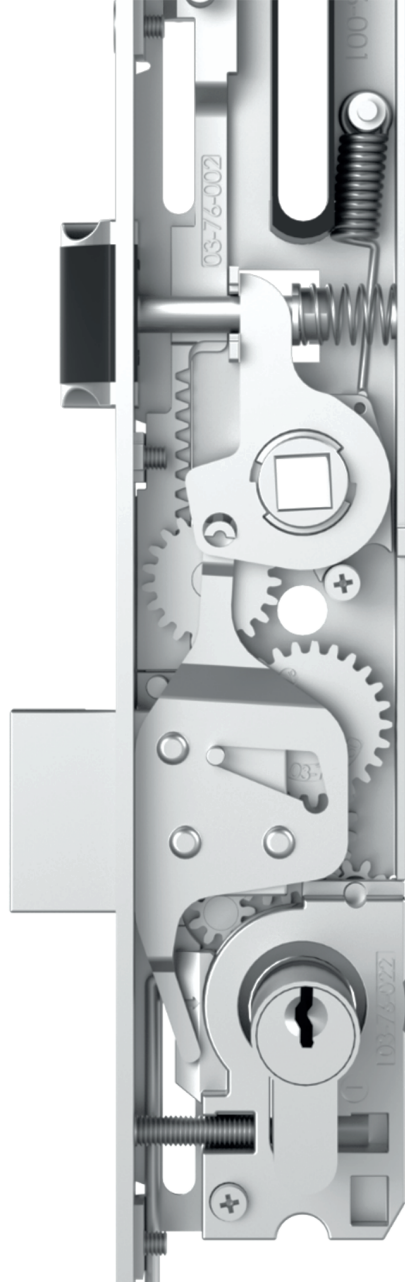
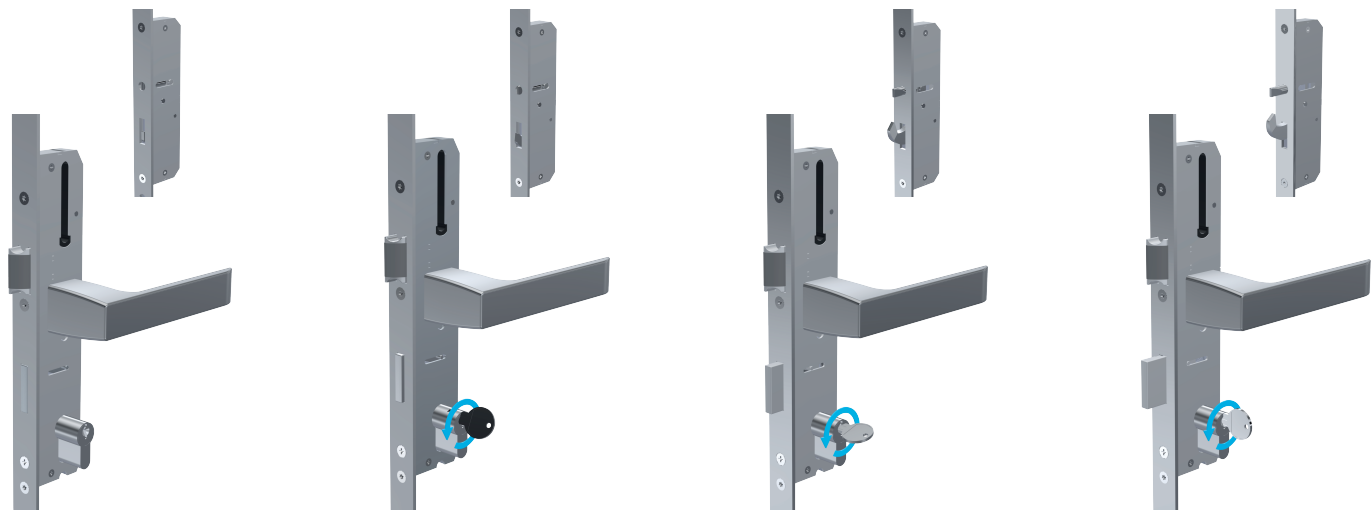
Backset measurement of 30 and 35mm, center distance of 85 and 92mm, with front widths of 16, 22, 24mm and length of 1730mm. Also available with a “U” shaped front.

### HIGH CORROSION RESISTANCE

Front of the lock in 304 stainless steel with hooks and pitons at the ends, lock cases in galvanized steel, and visible components in zamak with surface treatment in zinc/nickel, with guaranteed resistance of 480 hours in a salt spray chamber.

### SMOOTH, ROBUST, AND PROGRESSIVE LOCKING

When turning the key twice, achieving a perfect adjustment and a locking of the leaf to the frame of the system.

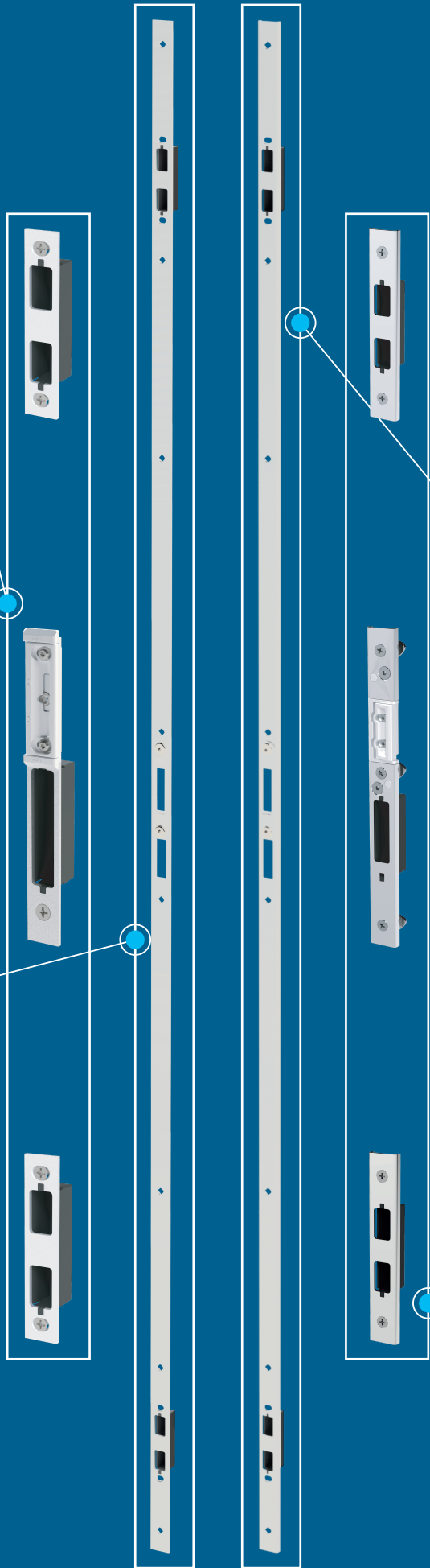
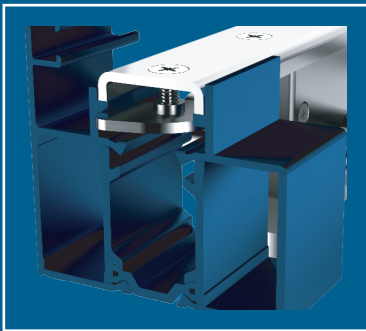


### ADJUSTABLE FLAT FRONT STRIKER PLATE KIT

Adjustable flat striker plate with widths of 20mm.

### FLAT FRONT FILANT STRIKER PLATE

Integral flat front striker plate solution, 22 and 24mm, with adjustment and nylon components to cover the machined hole in the profile.



### “U” SHAPED FILANT STRIKER PLATE

24mm “U” shaped strike plate, version with quick-fit clips that do not require screws directly into the profile.

### ADJUSTABLE “U” SHAPED STRIKER PLATE KIT

Adjustable 24mm wide “U” shaped striker plates. Version with quick-fit clips that eliminates the need for direct screws into the profile.



### LOCK FRONT

304 Stainless Steel  
Width: 16mm, 22mm, 24mm, “U”.  
Length: 1730mm.



### LOCK BOX

Lock box in galvanized steel.  
Width of 15mm, for a minimum machining of the door profile.



### LOCK MEASURES

Backset of 30mm and 35mm.  
Interaxis of 85mm and 92mm.

### COMPLETE LOCK SPECIFICATIONS

REFERENCE	CODE	DESCRIPTION	FACE PLATE				BOX		PACKAGING	
			WIDTH	LENGTH	MATERIAL	SHAPE	BACKSET	INTERAXE	TUBE	PACK
7765	7765-308516-173L	GEAR ACTION LOCK WITH PIN AND HOOK AND ADVANCING BOLT PROGRESSIVE LOCKING SYSTEM	16	1730	S5304	Lisa	30	85	1	6
	7765-308522-173L		22	1730	S5304	Lisa	30	85	1	6
	7765-308524-173L		24	1730	S5304	Lisa	30	85	1	6
	7765-308524-173U		24x6	1730	S5304	U	30	85	1	6

REFERENCE	CODE	DESCRIPTION	FACE PLATE				BOX		PACKAGING	
			WIDTH	LENGTH	MATERIAL	SHAPE	BACKSET	INTERAXE	TUBE	PACK
7765	7765-309216-173L	GEAR ACTION LOCK WITH PIN AND HOOK AND ADVANCING BOLT PROGRESSIVE LOCKING SYSTEM	16	1730	S5304	Lisa	30	92	1	6
	7765-309222-173L		22	1730	S5304	Lisa	30	92	1	6
	7765-309224-173L		24	1730	S5304	Lisa	30	92	1	6
	7765-309224-173U		24x6	1730	S5304	U	30	92	1	6

REFERENCE	CODE	DESCRIPTION	FACE PLATE				BOX		PACKAGING	
			WIDTH	LENGTH	MATERIAL	SHAPE	BACKSET	INTERAXE	TUBE	PACK
7765	7765-358516-173L	GEAR ACTION LOCK WITH PIN AND HOOK AND ADVANCING BOLT PROGRESSIVE LOCKING SYSTEM	16	1730	S5304	Lisa	35	85	1	6
	7765-358522-173L		22	1730	S5304	Lisa	35	85	1	6
	7765-358524-173L		24	1730	S5304	Lisa	35	85	1	6
	7765-358524-173U		24x6	1730	S5304	U	35	85	1	6

REFERENCE	CODE	DESCRIPTION	FACE PLATE				BOX		PACKAGING	
			WIDTH	LENGTH	MATERIAL	SHAPE	BACKSET	INTERAXE	TUBE	PACK
7765	7765-359216-173L	GEAR ACTION LOCK WITH PIN AND HOOK AND ADVANCING BOLT PROGRESSIVE LOCKING SYSTEM	16	1730	S5304	Lisa	35	92	1	6
	7765-359222-173L		22	1730	S5304	Lisa	35	92	1	6
	7765-359224-173L		24	1730	S5304	Lisa	35	92	1	6
	7765-359224-173U		24x6	1730	S5304	U	35	92	1	6