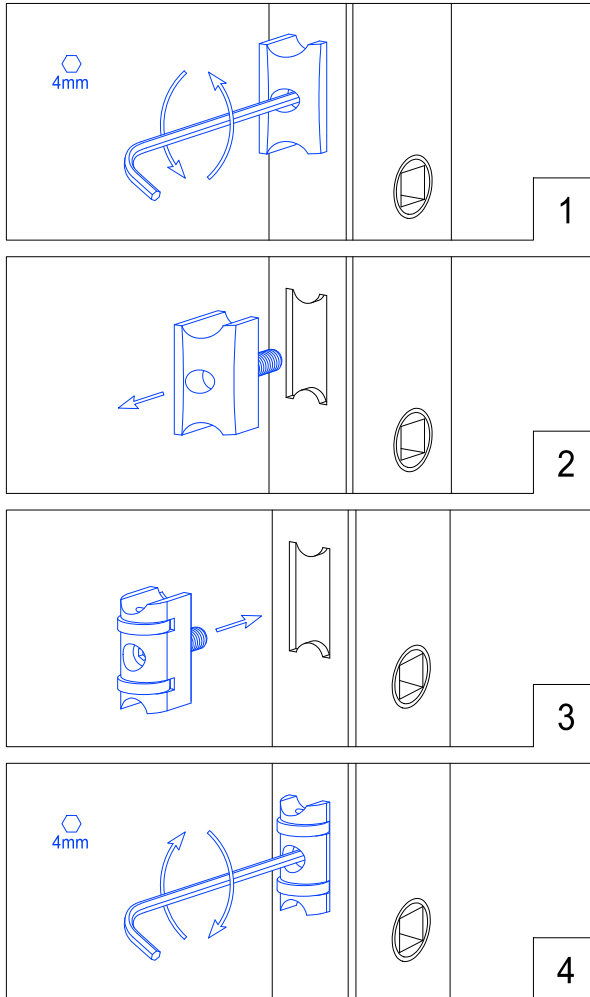
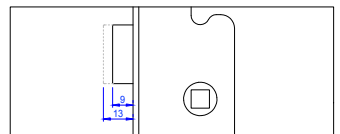
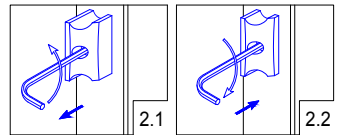
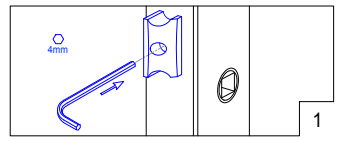
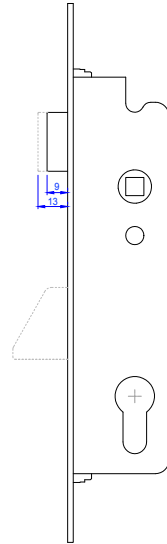
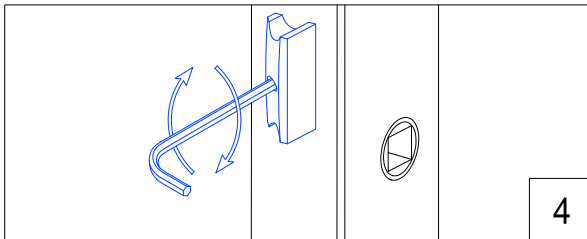
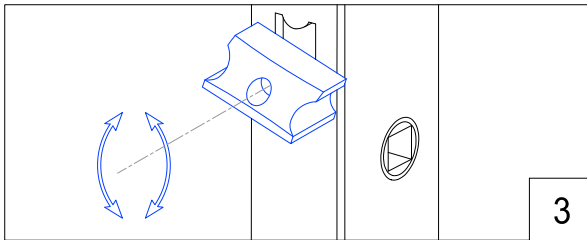
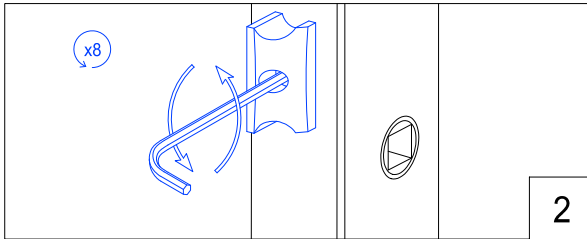
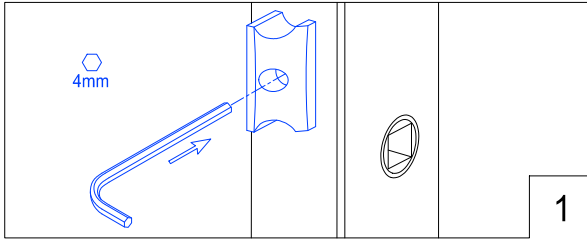


Mudar o trinco para rolete.
Cambiar el pestillo al rodillo.
Changing latch to roller.
Changer le demi-tour à rouleau.



ALUMINIUM IT'S IN OUR DNA

Regulação do trinco e mudança de mão.
Regulación del pestillo y cambio de mano.
Latch regulation and reversing hand.
Réglage du demi-tour et inverser la main.



Não apertar até ao final da rosca. Pode bloquear.
No apretar el tornillo hasta el final. Puede bloquear.
Do not tighten the screw till the end of the thread. May block.
Ne pas serrer la vis jusqu'à la fin du filetage. Peut bloquer.

ALUMINIUM IT'S IN OUR DNA